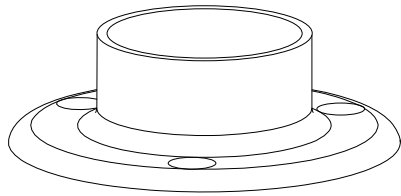


ROUND BASE PLATE

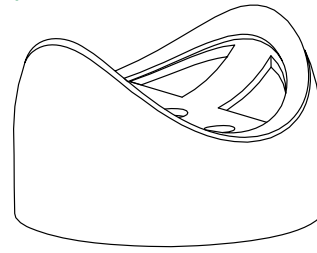
(HR9)



SIZE	PRICE
38mm	28.00
50mm	32.00

PERPENDICULAR JOINER

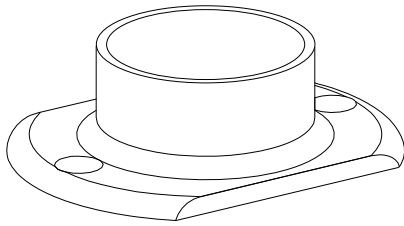
(HR10)



SIZE	PRICE
38mm	10.00
50mm	14.50

OBLONG BASE PLATE

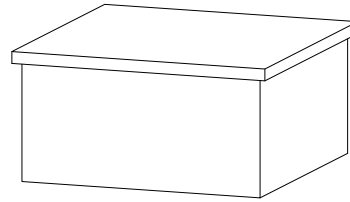
(HR11)



SIZE	PRICE
38mm	25.00
50mm	31.00

SQUARE FLAT CAP

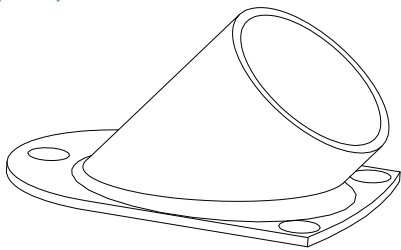
(HR12)



SIZE	PRICE
50mm	19.00

WALL STOP FLANGE

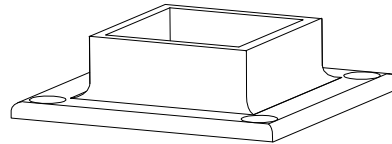
(HR13)



SIZE	PRICE
38mm	33.00
50mm	35.50

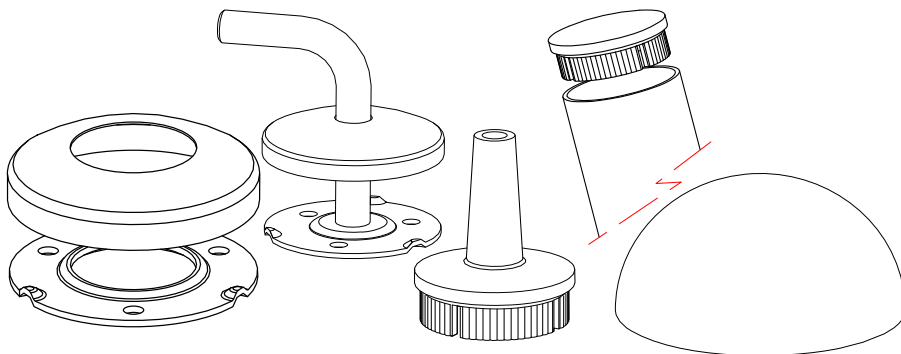
SQUARE BASE PLATE

(HR14)



SIZE	PRICE
50mm	53.00

S/S BALUSTRADE FITTINGS - BASE PLATES, END CAPS



SIZE	B/Plate & Cover	Push in Cap	Wall Brkt	Rail Conv	Dome Cap
12mm	7.00	-	20.00	-	-
19mm	7.00	-	-	-	3.00
25mm	7.00	4.50	-	-	3.50
31mm	8.50	5.00	-	-	4.00
38mm	8.50	6.50	-	8.00	5.50
50mm	13.00	8.50	-	11.50	7.00
63mm	23.50	13.00	-	-	8.00
76mm	28.00	17.00	-	-	10.00
100mm	-	28.00	-	-	17.00
125mm	-	-	-	-	26.00
150mm	-	-	-	-	33.00

HRBPC HRPIC HRWB HRRC HRDC